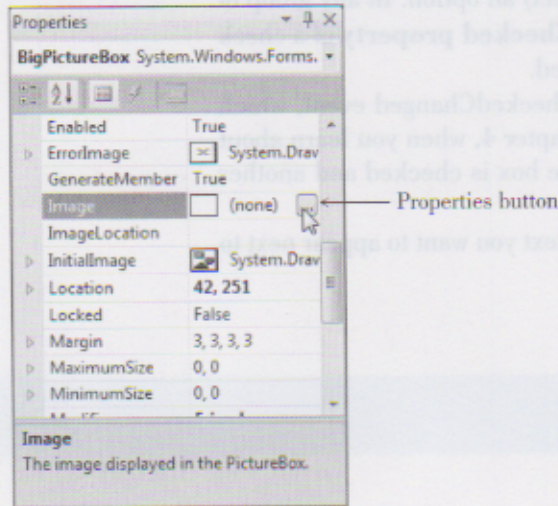
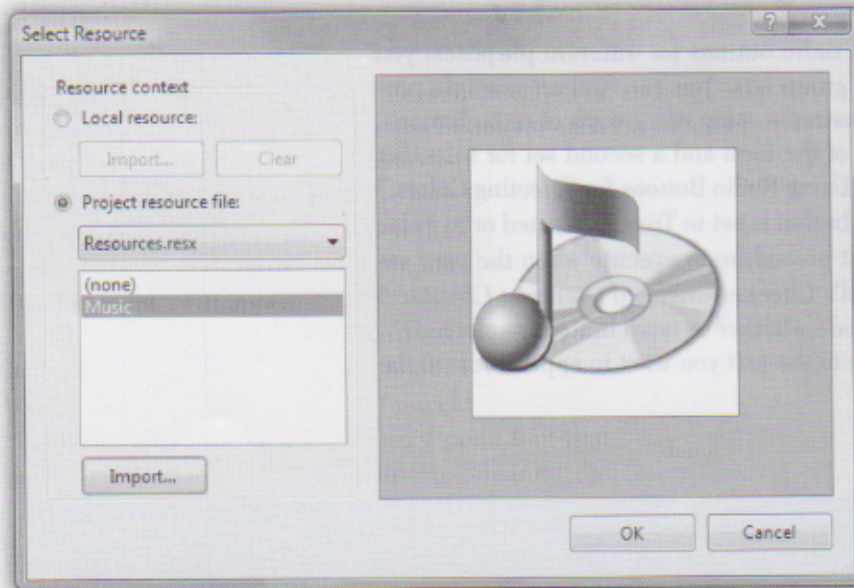


**Figure 2.6**

Click on the **Image** property for a **PictureBox** control, and a **Properties** button appears. Click on the **Properties** button to view the **Select Resource** dialog box.

**Figure 2.7**

The **Select Resource** dialog box. Make your selection here for the graphic file you want to appear in the **PictureBox** control; click **Import** to add an image to the list.

Click on the **Import** button of the **Select Resource** dialog box to add images. An **Open** dialog box appears (Figure 2.8), where you can navigate to your image files. A preview of the image appears in the preview box.

*Note:* To add files with an **.ico** extension, select **All Files** for the **Files of type** in the **Open** dialog box.