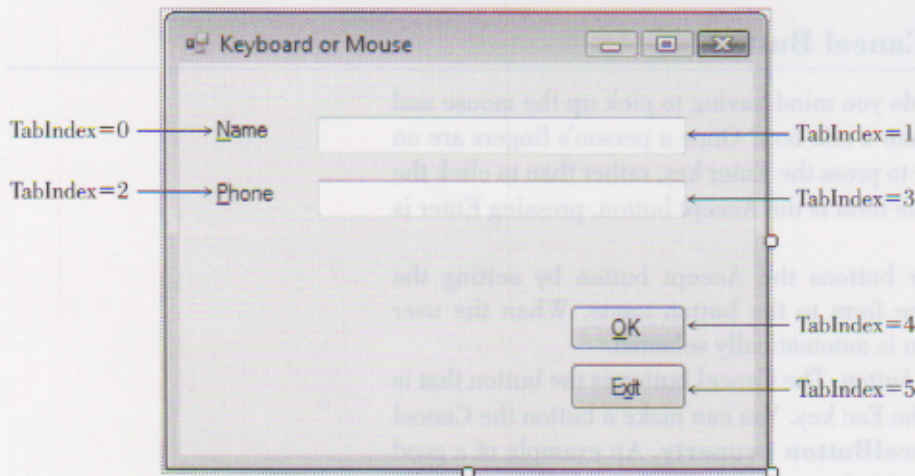


Figure 2.17

To use a keyboard access key for a text box, the `TabIndex` of the label must precede the `TabIndex` of the text box.



is different from other controls: The `Tab` key takes you only to one radio button in a group (the selected button), even though all buttons in the group have their `TabStop` and `TabIndex` properties set. If you are using the keyboard to select radio buttons, you must tab to the group and then use your up and down arrow keys to select the correct button.

Setting the Tab Order

To set the tab order for controls, you can set each control's `TabIndex` property in the Properties window. Or you can use Visual Studio's great feature that helps you set `TabIndex`s automatically. To use this feature, make sure that the Design window is active and select *View / Tab Order* or click the *Tab Order* button on the Layout toolbar. (The *Tab Order* item does not appear on the menu and is not available on the Layout toolbar unless the Design window is active.) Small numbers appear in the upper-left corner of each control; these are the current `TabIndex` properties of the controls. Click first in the control that you want to be `TabIndex` zero, then click on the control for `TabIndex` one, then click on the next control until you have set the `TabIndex` for all controls (Figure 2.18).

TIP

Make sure to not have duplicate numbers for the `TabIndex` properties or duplicate keyboard access keys. The result varies depending on the location of the focus and is very confusing. ■

Figure 2.18

Click on each control, in sequence, to set the `TabIndex` property of the controls automatically.

