

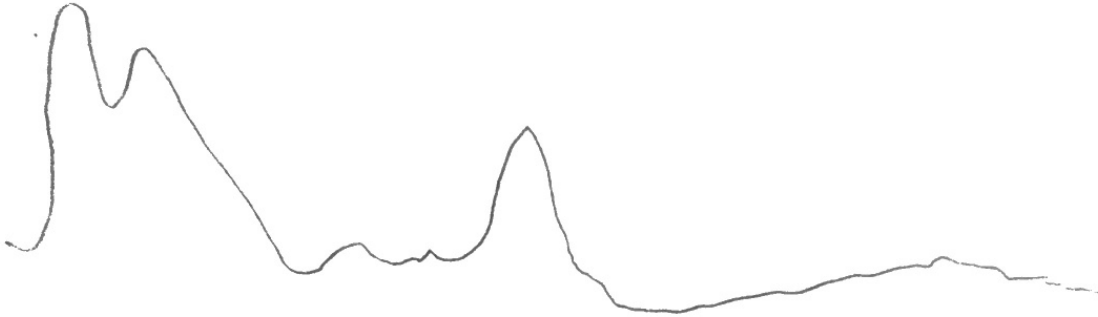
## Isolation of Chlorophyll Results Page

Name: \_\_\_\_\_

Date: \_\_\_\_\_

### PART A: Data Collection (25 points)

1. Sketch the graph showing the **absorbance spectrum** of chlorophyll isolated from spinach leaves. Correctly label axes.



2. Record the maximum absorbance and corresponding wavelength (nm) in Table 1.

Sample	Absorbance Peak 1	Wavelength (nm) at max. absorbance	Light Spectrum Color	Absorbance Peak 2	Wavelength (nm) at max. absorbance	Light Spectrum Color
Fresh extract	0.385	398.20	Purple	.344	432.20	Blue
Virgin olive oil	0.587	400.00	Purple	.668	449.10	Blue <sup>light</sup>
Regular olive oil	0.440	398.20	Purple	.096	671.80	Red
Light olive oil	.165	398.20	Purple	—	—	—
Unknown sample	.166	397.30	Purple	—	—	—