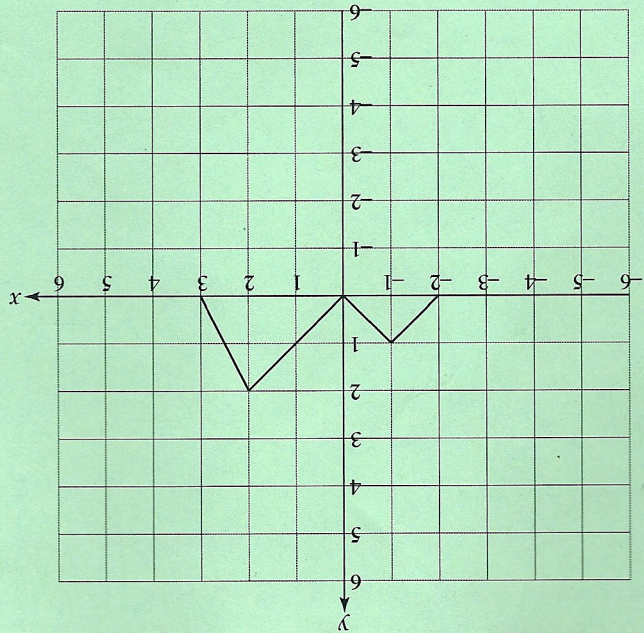
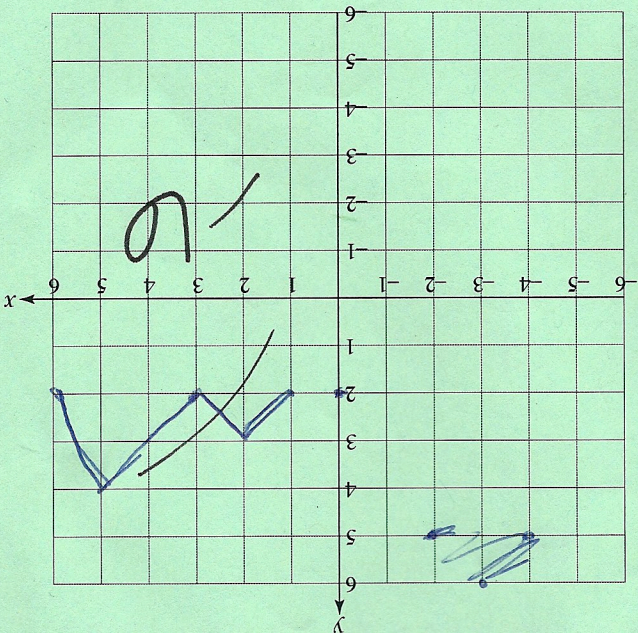


8. (18 points) The graph of the function $f(x)$ is shown below. Use this graph to sketch the graph of each of the following functions. In each case, state what transformations are applied to obtain the graph from the graph of the original function.

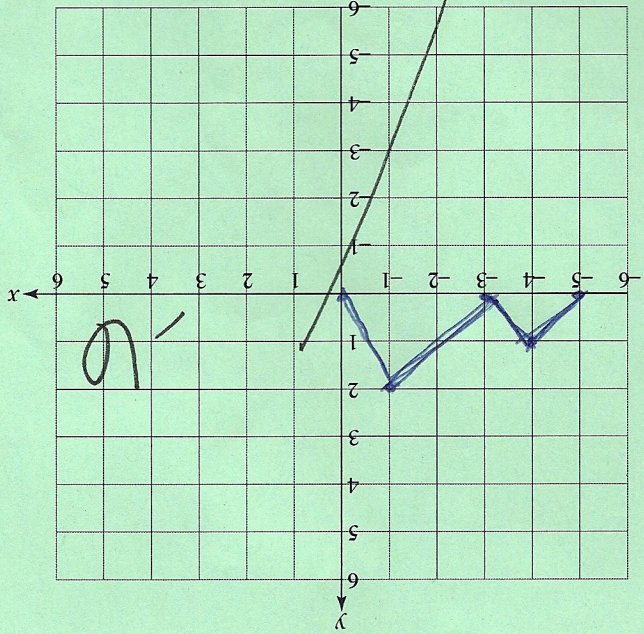
$f(x)$



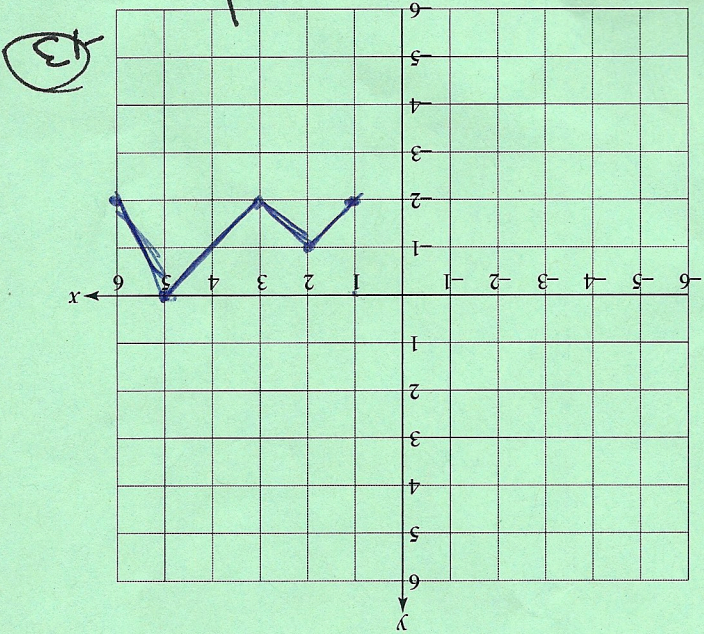
(a) $g(x) = 2f(x) + 3$



(b) $h(x) = 3f(-x)$



(c) $k(x) = f(x - 3) - 2$



~~Stretch shifted two units up
shifted 3 units to the right.~~

~~Shifted 3 units to the left.~~

~~Shifted 3 units to the right stretched 2 units down.~~