

02/05/2018

II

PART A

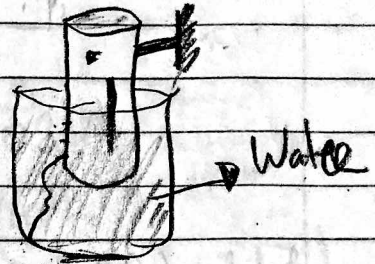
# FLUID LAB #

Diameter  $\Rightarrow$  70,08 mm  
cylinder

Beaker weight  $\Rightarrow$  213 g<sup>tw</sup>

Ambient temp  $\Rightarrow$  20,5°C

Water temp  $\Rightarrow$  20°C

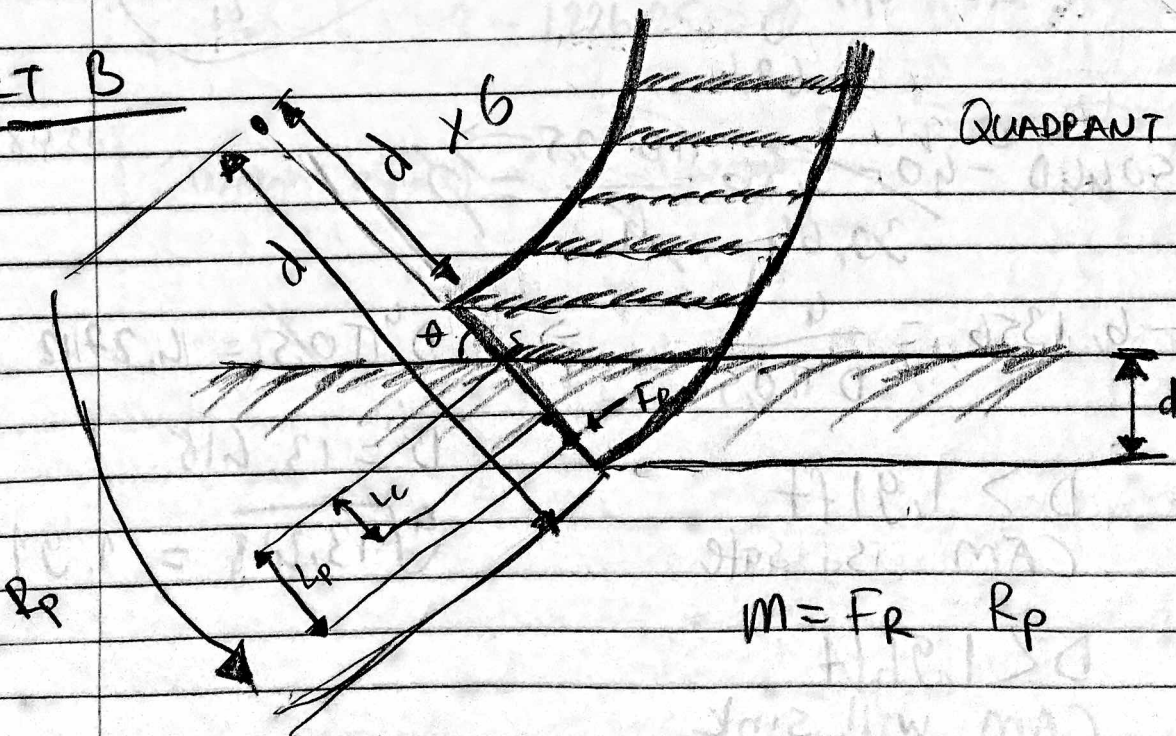


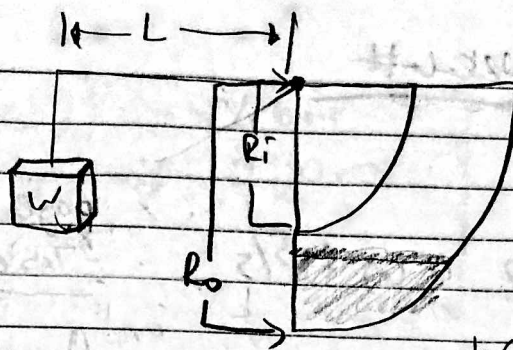
x6

	Ads Distance	Beaker + Water	Beaker Fb + Water
2cm	26 mm	516 g	617 g
3cm	30 mm <sup>+4</sup>	528,9 g	646,8 g
3,5cm	35 mm <sup>+5</sup>	546,8 g	680 g
4,5cm	47 mm <sup>+12</sup>	586 g	763 g
5 cm	52 mm <sup>+5</sup>	602,6 g	798 g
6 cm	61 mm <sup>+9</sup>	632 g	863 g

PART B

QUADRANT TANK





$R_o = 20,8 \text{ cm}$   
 $R_i = 10,9 \text{ cm}$   
 $L = 20 \text{ cm}$   
 $W = 7,5 \text{ cm}$

$90^\circ$



$W = 7,5 \text{ cm}$

level	Weights added	$d (r_o - h)$
60	700g	
70	580g	
96	380g	
115	290g	
140	160g	
165	80g	

for the  
radius

$60^\circ$

weight actual h

(144)	60	→	680g	60 mm
(114)	70	→	490g	68 mm
(89)	95	→	330g	95 mm
(69)	115	→	240g	112 mm
(44)	140	→	90g	140 mm
(19)	165	→	40g	165 mm