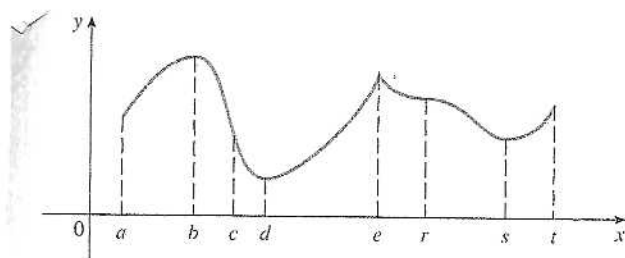


Name:

Montgomery College
Rockville Campus
Department of Mathematics and Statistics
MATH 181 - Calculus I
Finding Extreme Values

1 = Local Maximum; 2 = Local Minimum; 3 = Absolute Maximum; 4 = Absolute Minimum; 5 = Differentiable 6 = Not Differentiable



1. For each letter circle all that is applicable.

- | | | | | | | |
|------|---|---|---|---|---|---|
| (a.) | 1 | 2 | 3 | 4 | 5 | 6 |
| (b.) | 1 | 2 | 3 | 4 | 5 | 6 |
| (c.) | 1 | 2 | 3 | 4 | 5 | 6 |
| (d.) | 1 | 2 | 3 | 4 | 5 | 6 |
| (e.) | 1 | 2 | 3 | 4 | 5 | 6 |
| (r.) | 1 | 2 | 3 | 4 | 5 | 6 |
| (s.) | 1 | 2 | 3 | 4 | 5 | 6 |
| (t.) | 1 | 2 | 3 | 4 | 5 | 6 |