

FIGURE 5A.1 Add Duration Data

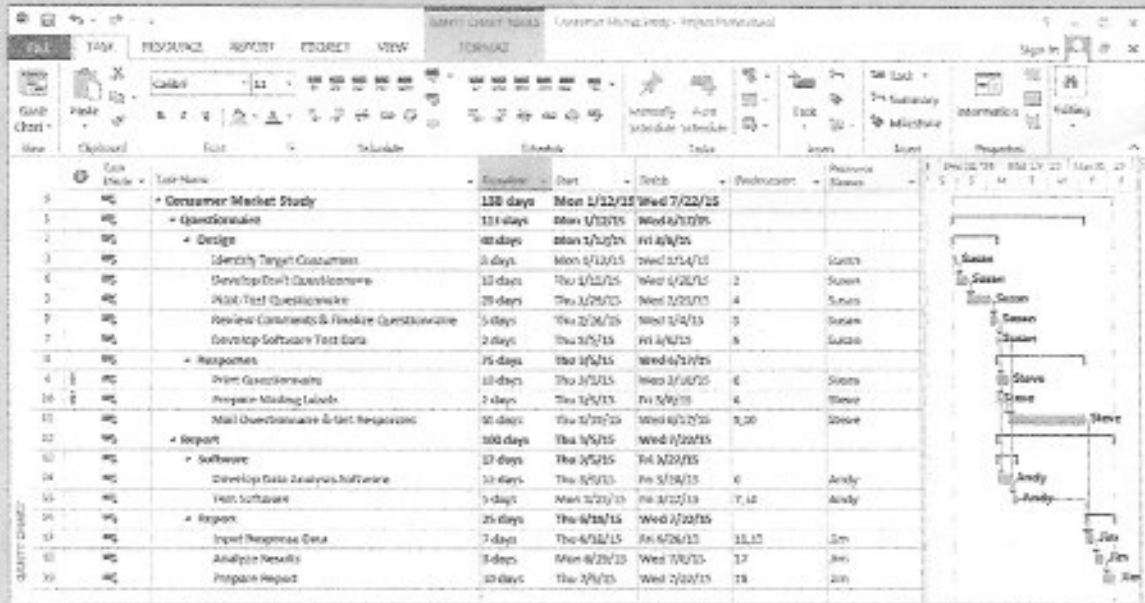


Figure 5A.2. Note that the Timeline has been unchecked in the Split View group on the View ribbon.

Microsoft project automatically creates the Gantt chart to the right of the tables in the Gantt Chart View as you enter tasks and their task information. The Gantt

FIGURE 5A.2 Gantt Chart View/Schedule Table

