



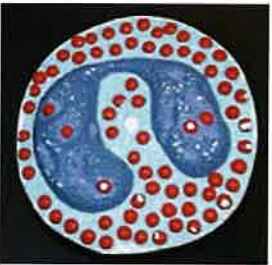
A



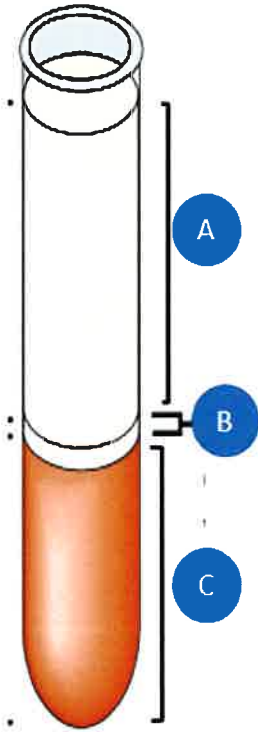
B



C



1. Identify cell A and give a function
2. Identify cell B and give a function
3. Identify cell C and give a function
4. What is the most abundant leucocyte?

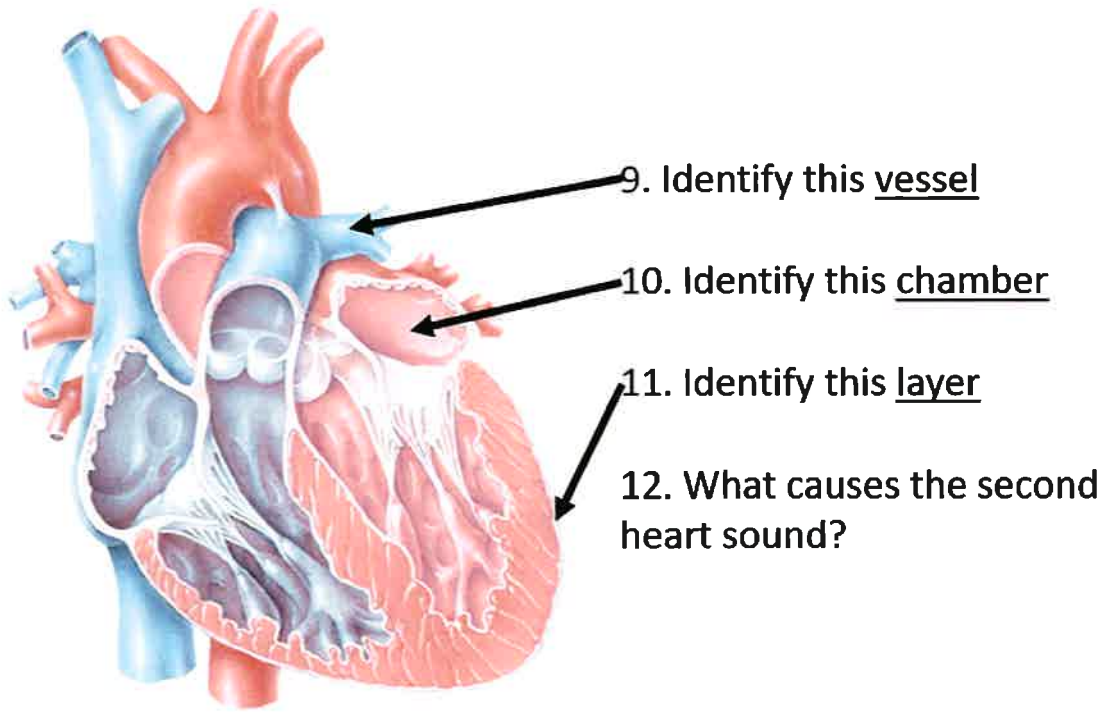


5. Identify layer A

6. Identify layer B

7. Identify layer C

8. What do men have more C than women?

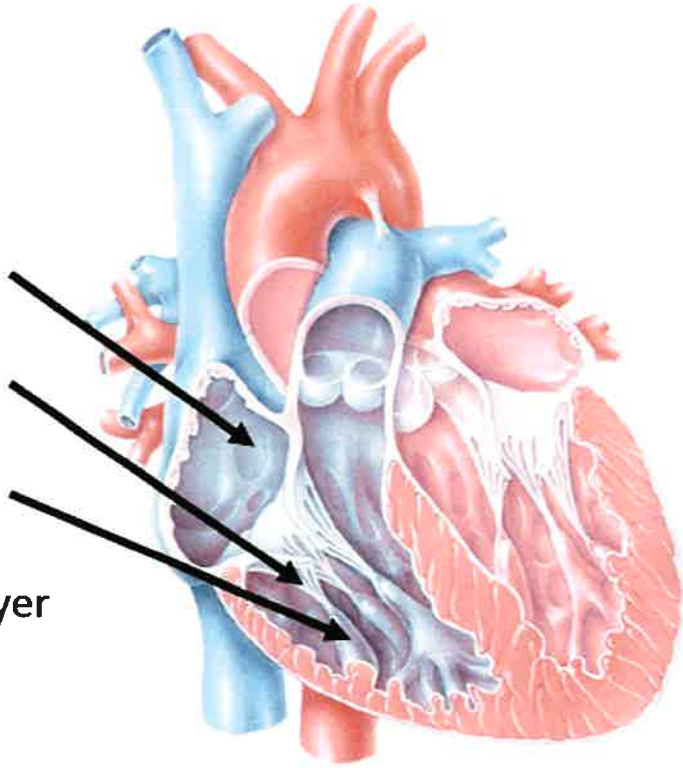


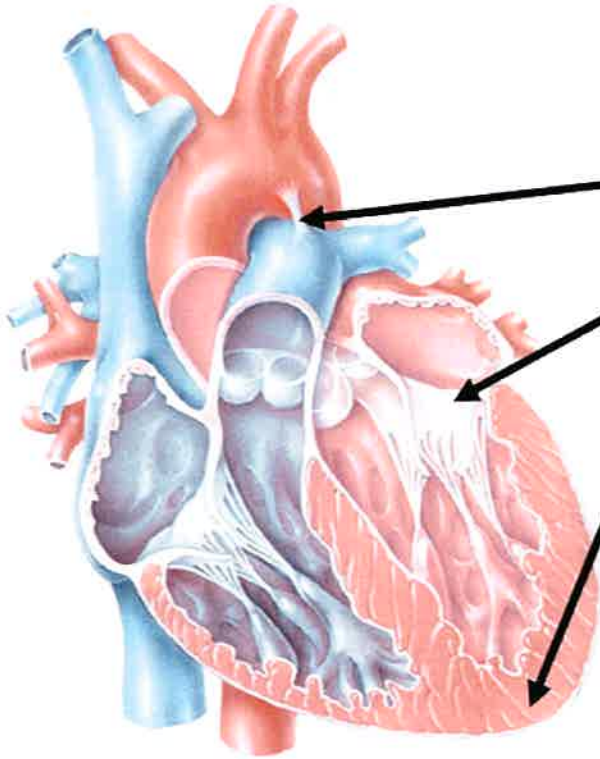
13. Identify this structure

14. Identify this structure

15. Identify this structure

16. What is the middle layer
thicker in ventricles?





17. Identify this structure

18. Identify this structure

19. Identify this region

20. What forms the base of the heart?

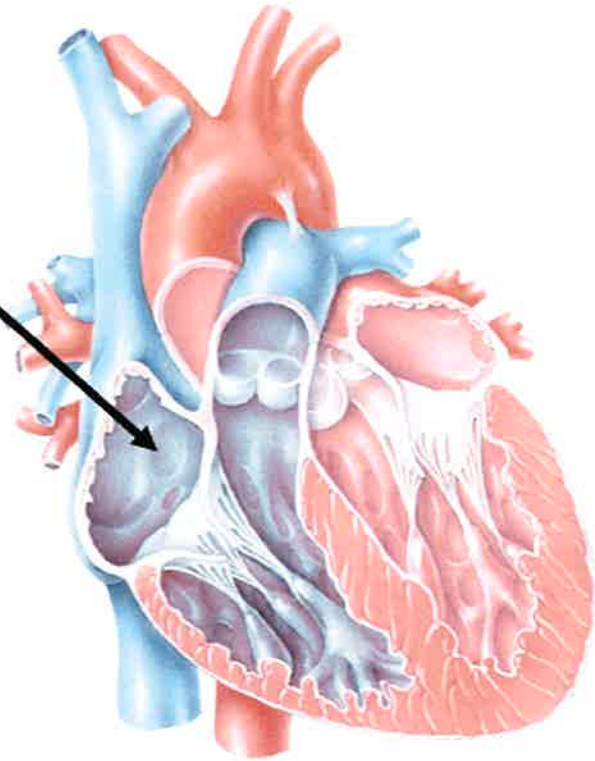
21. Identify this chamber

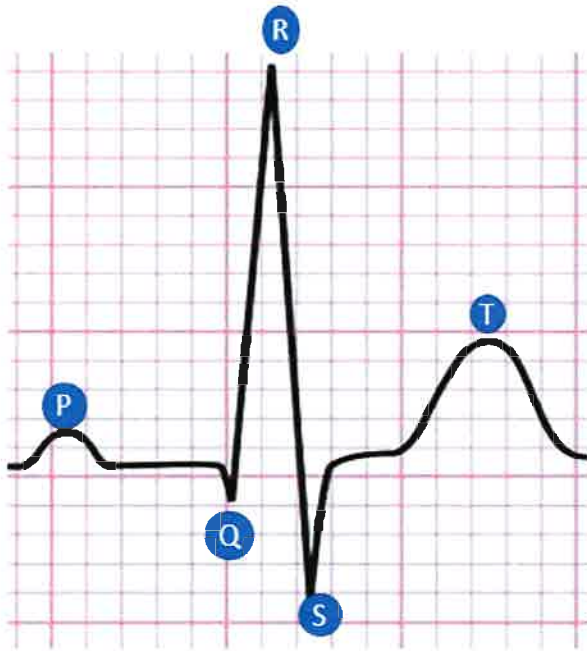
The vessels that open into this chamber are:

22.

23.

24.





25. P wave represents _____

26. QRS complex represents _____

27. T wave represents _____

28. Which wave represents atrial repolarization

29. To which group(s) can O+ blood donate?

30. From which group(s) can AB- receive

31. To which group(s) can B+ donate

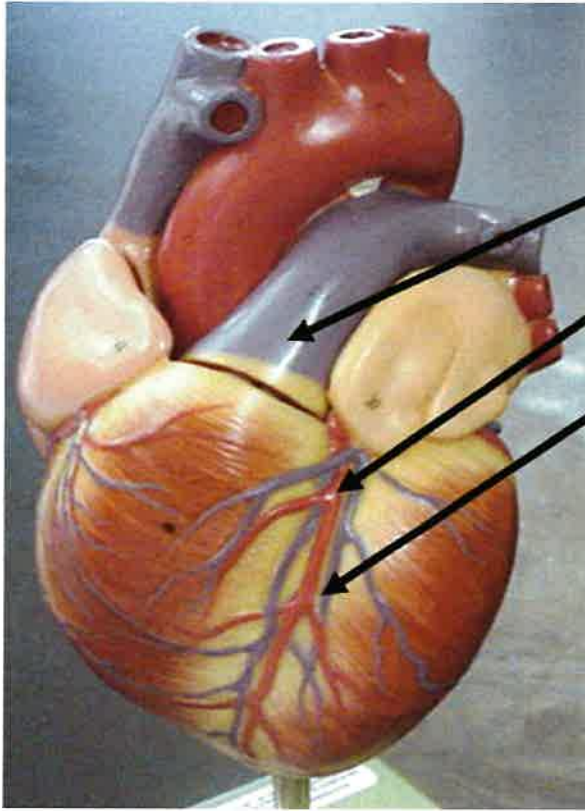
32. Why is O- able to donate to all groups?

33. What is anemia?

34. What causes pernicious anemia?

35. What causes aplastic anemia

36. Name a type of anemia in which there is hemolysis due to a genetic defect

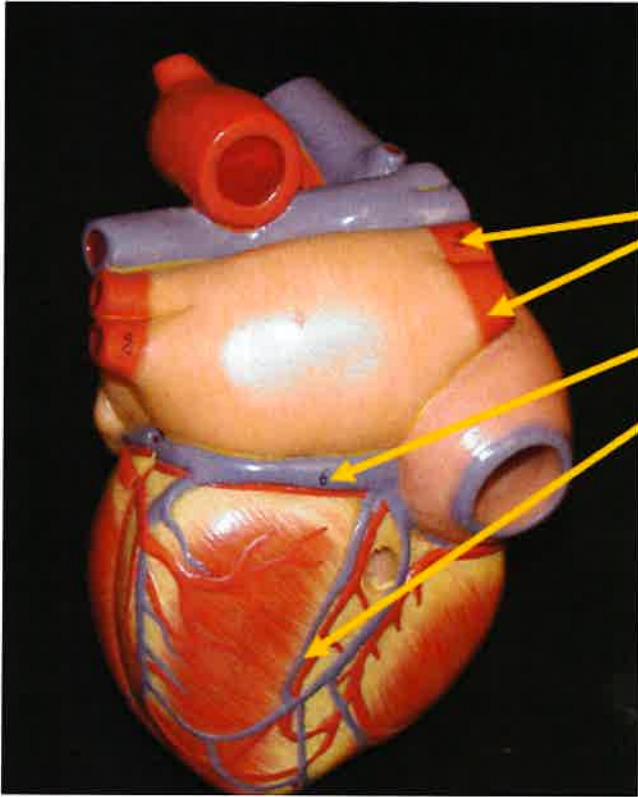


37. Identify this vessel

38. Identify this vessel (red)

39. Identify this vessel (blue)

40. List the branches of the right coronary artery?

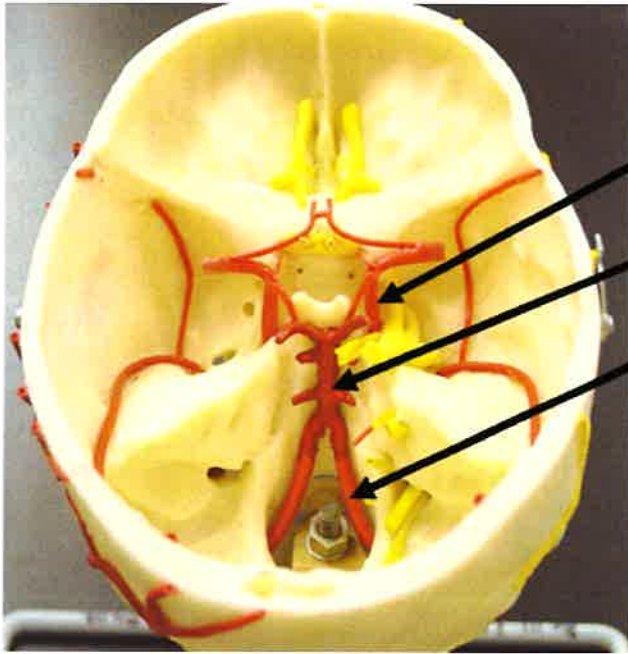


41. Identify these vessels

42. Identify this vessel (blue)

43. Identify this vessel (blue)

44. The circumflex artery is a branch of what?

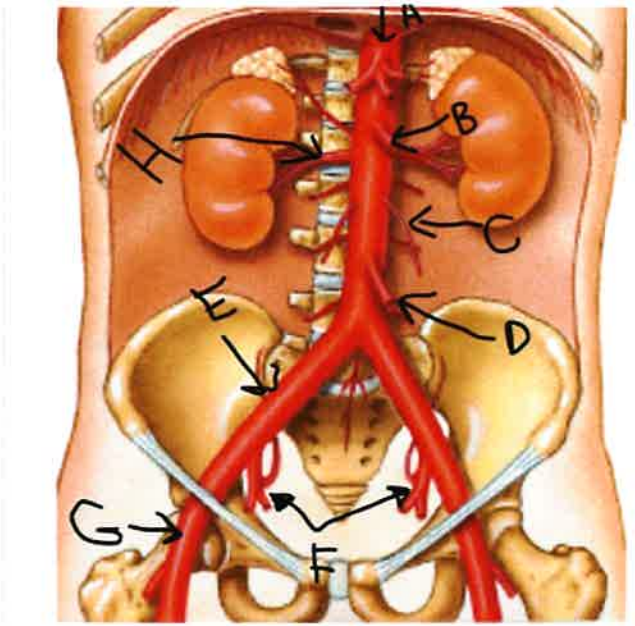


45. Identify this vessel

46. Identify this vessel

47. Identify this vessel

48. What is an anastomosis?

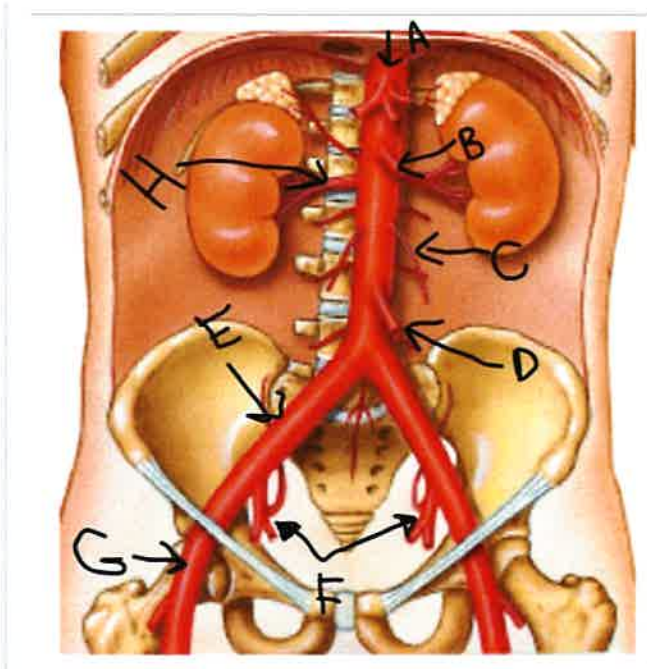


49. Identify vessel A

50. Identify vessel B

51. Identify vessel C

52. List 3 organs supplied by A

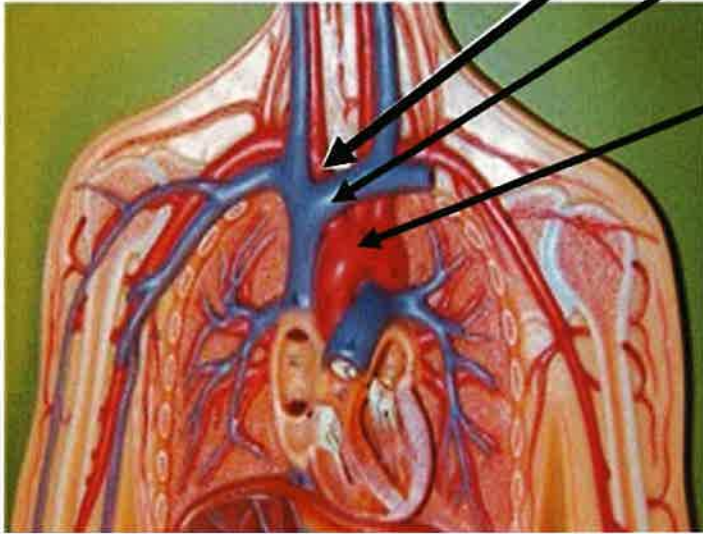


53. Identify vessel D

54. Identify vessel E

55. Identify vessel H

56. List 2 organs supplied by F

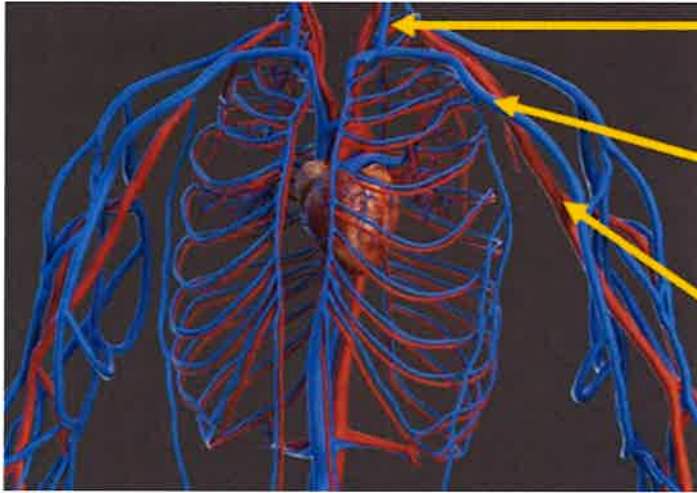


57. Identify this vessel (red)

58. Identify this vessel (blue)

59. Identify this region (red)

60. The left internal carotid is a branch of what?



61. Identify this vessel (blue)

62. Identify this vessel (blue)

63. Identify this vessel (red)

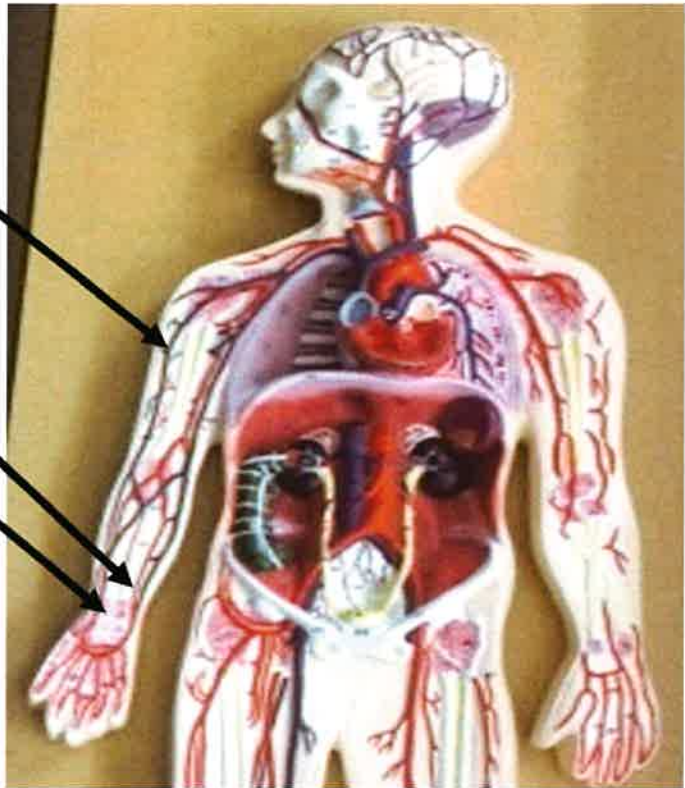
64. How does it end?

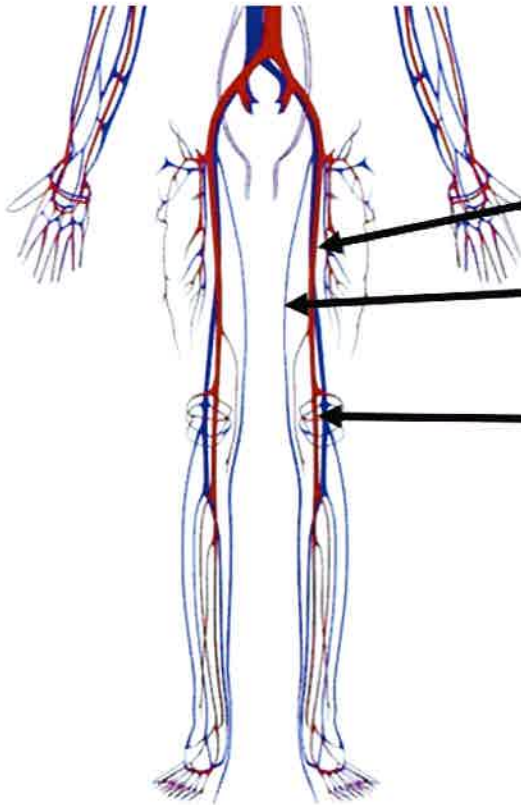
65. Identify this vessel (blue)

66. Identify this vessel (blue)

67. Identify this vessel (red)

68. What vessels supply the fingers?





69. Identify this vessel (red)

70. Identify this vessel (blue)

71. Identify this vessel (red)

72. How does this vessel end?

73. Name the 2 veins connected by the ductus venosus in the fetus

74. What are the regions of the aorta

75. List the 3 plasma proteins

Bonus: List 2 structural differences between arteries and veins