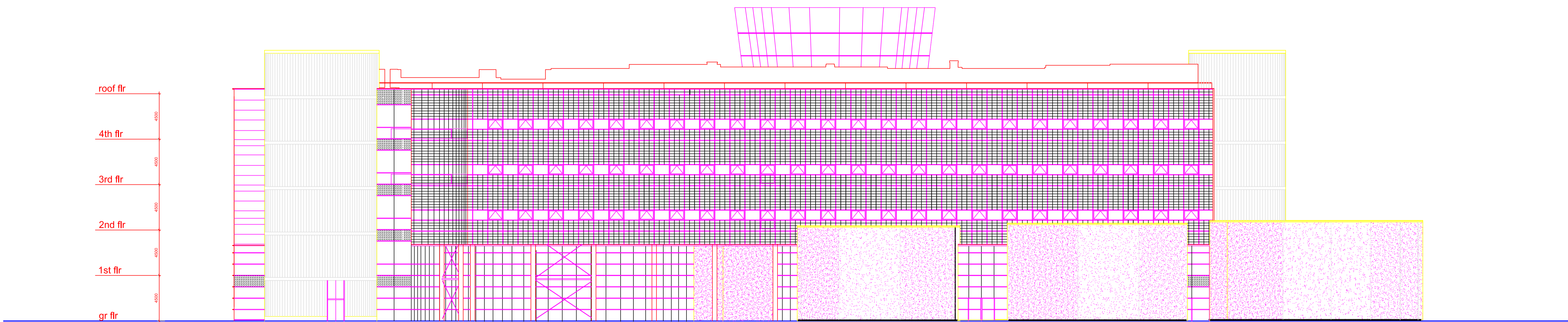
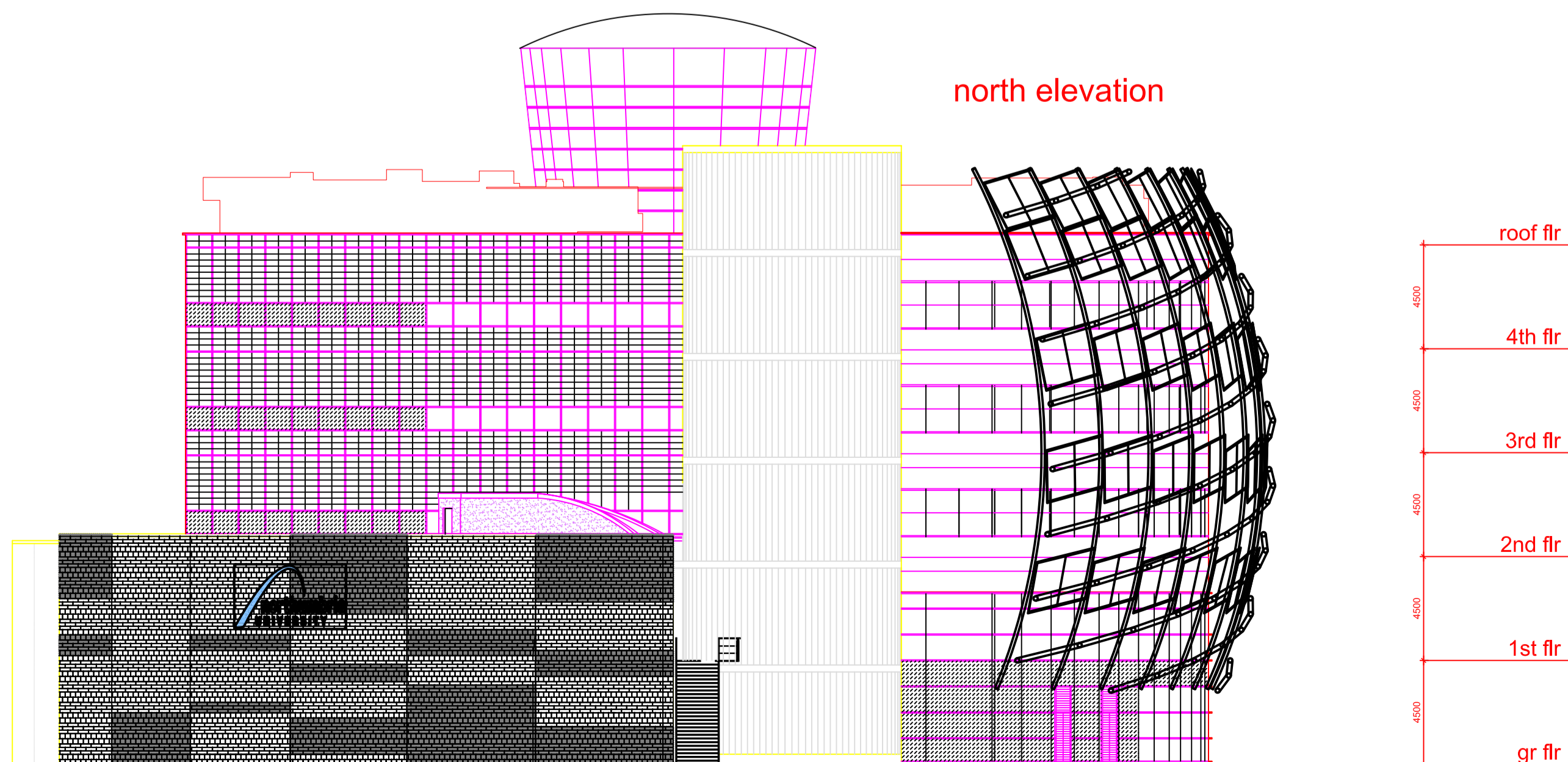


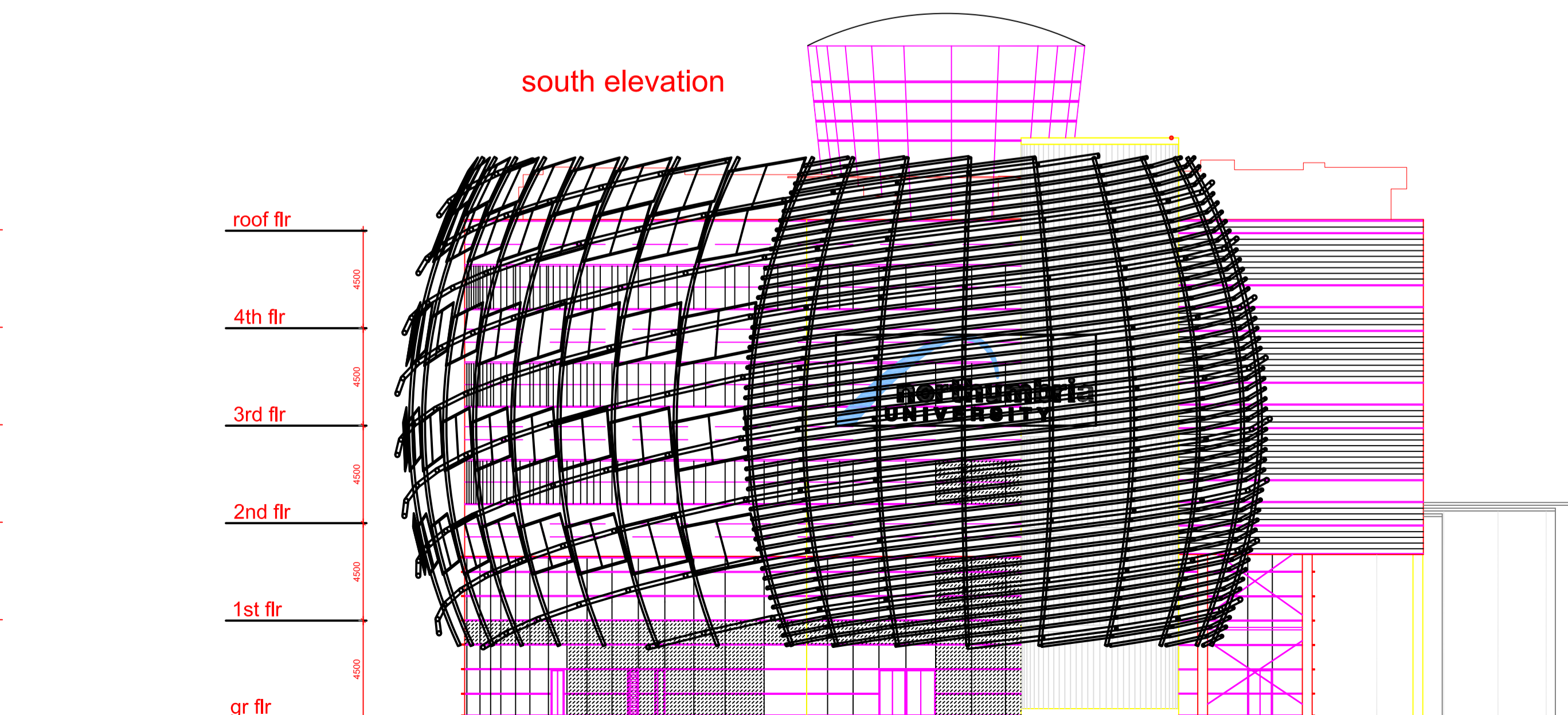
west elevation



courtyard elevation - law & business school



north elevation



south elevation

Campus Services Parsons Building Camden Street Newcastle upon Tyne NE1 8ST	
Campus: CITY CENTRE Building: CITY CAMPUS EAST 1 (CCE1) Title: FACULTY OF BUSINESS & LAW BUILDING EXTERNAL ELEVATIONS	Scale: 1:200@A1 Date: FEB 2018 Drawn: Issued: Project No: Drawing No: Rev: